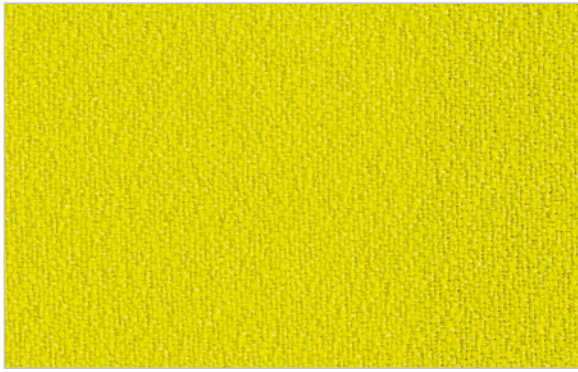


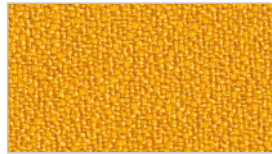
**Olivo &**  
**Gropppo**  
**1958**

CARTELLA COLORI **63**  
COLOR FABRICS

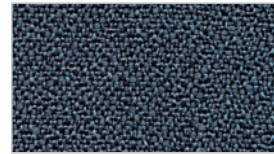
# BONDAI CAT. A



B7041



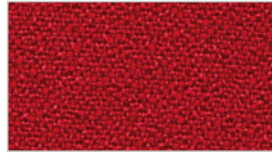
B3013



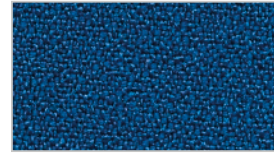
B8010



B8013



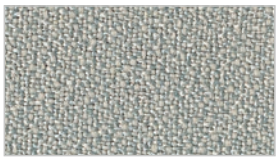
B4011



B6016



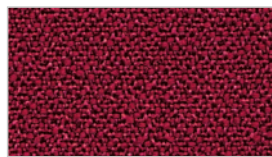
B8033



B8004

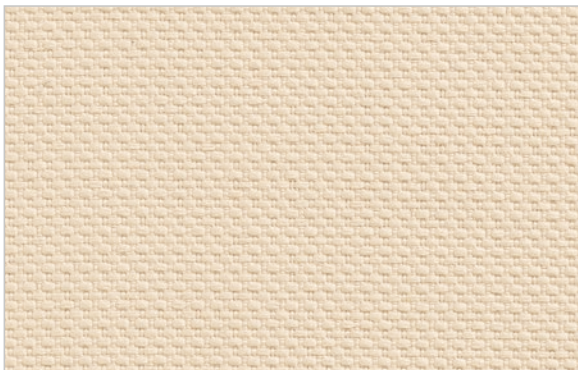


B2020

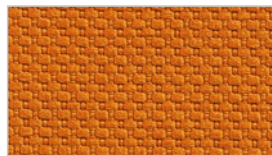


B4007

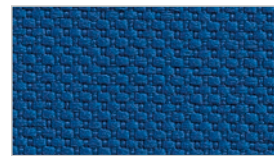
# RADIO CAT. B



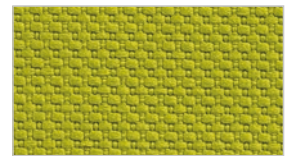
R1008



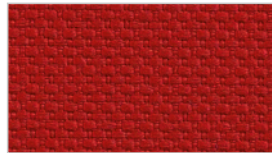
R3082



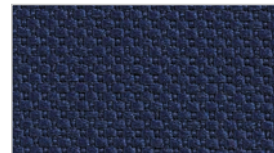
R6071



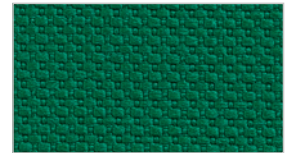
R7025



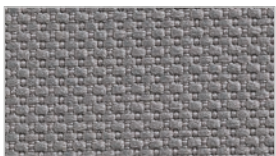
R4028



R6098



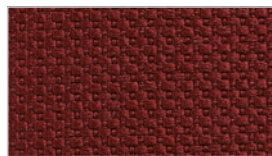
R7008



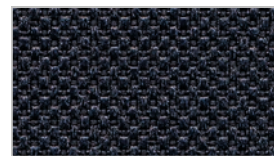
R8032



R2036



R4017



R8017



R8033



**SKILL**  
CAT. B



S56



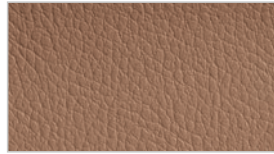
S12



S36



S17



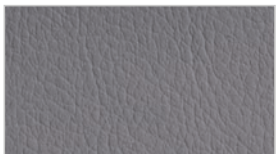
S30



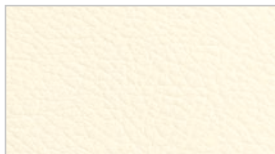
S34



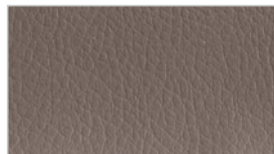
S20



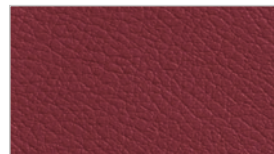
S6



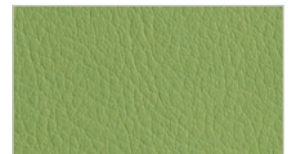
S2



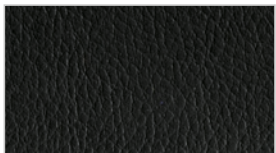
S15



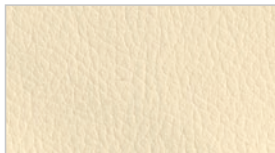
S39



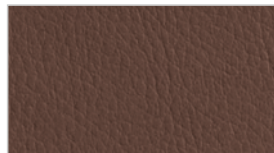
S22



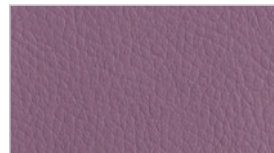
S8



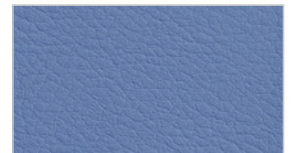
S26



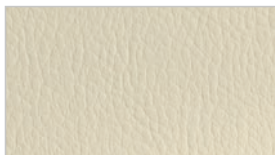
S31



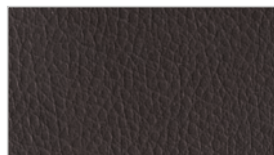
S43



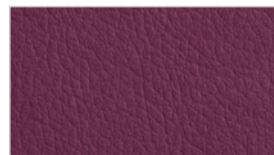
S51



S10



S16

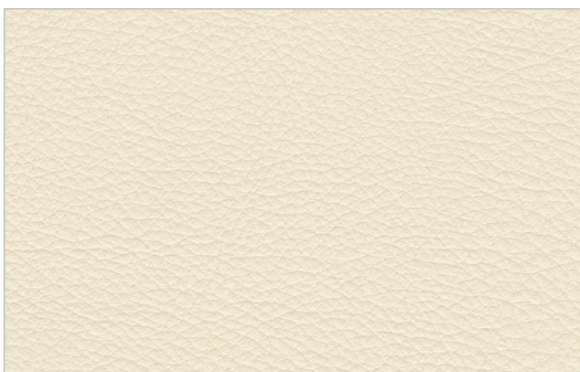


S47

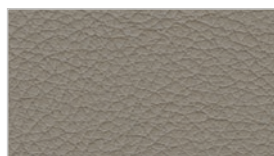


S54

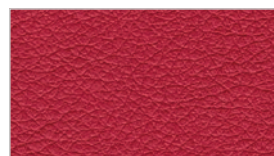
**SECRET**  
CAT. C



SC1002



SC1035



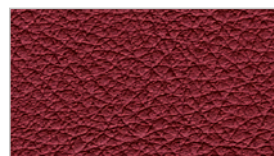
SC1009



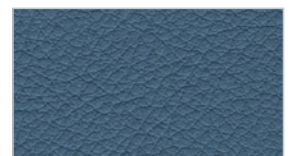
SC1032



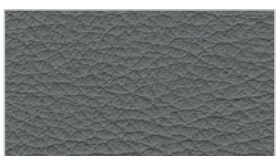
SC1006



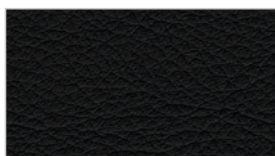
SC1019



SC1021



SC1024

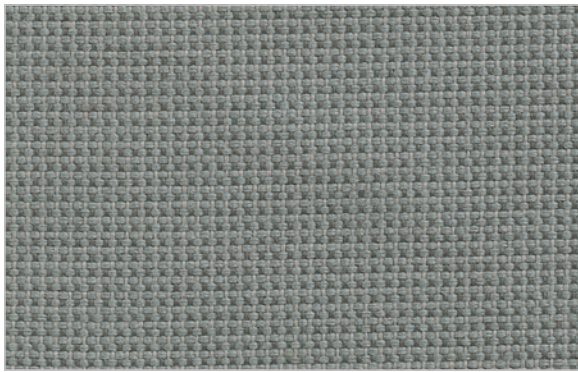


SC1017

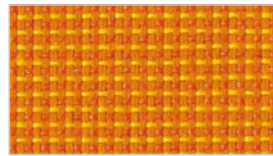


# KING L

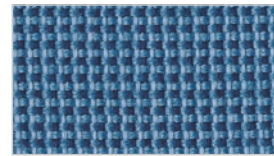
CAT. C



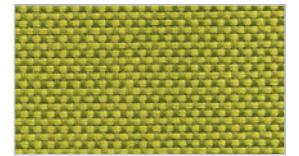
KL8514



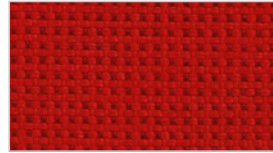
KL4930



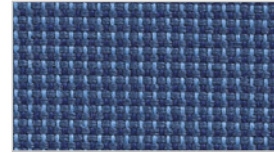
KL6943



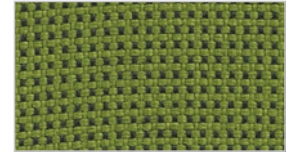
KL9704



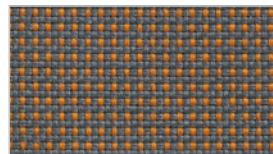
KL4528



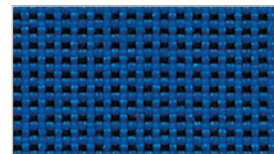
KL6516



KL9706



KL8508



KL6572



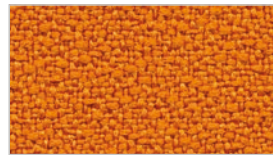
KL8534

# KING FLEX

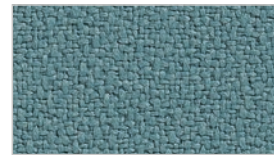
CAT. C



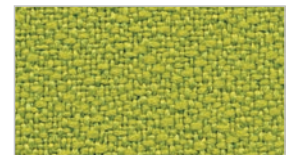
KF1037



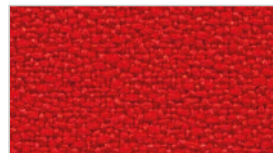
KF4030



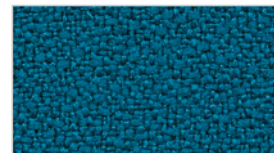
KF6030



KF7011



KF4027



KF6031



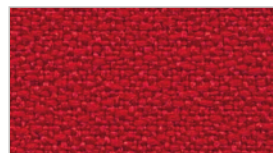
KF7019



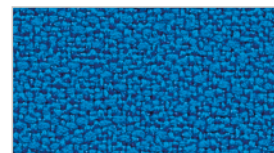
KF8007



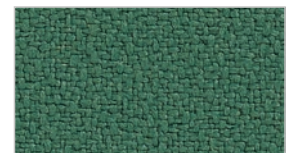
KF8033



KF4008



KF6011



KF7015



KF1006



KF2031



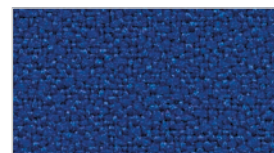
KF4009



KF6071



KF7020



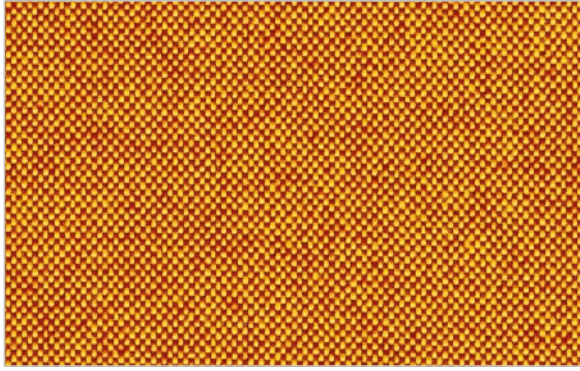
KF6080



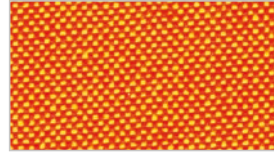
KF7008



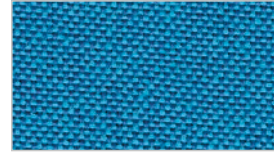
**TORINO**  
CAT. C



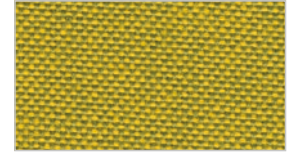
T9302



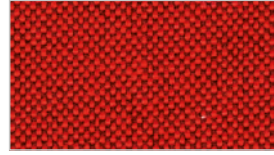
T9312



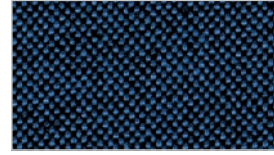
T9606



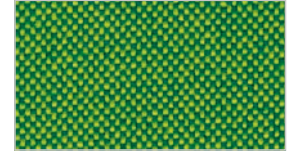
T9702



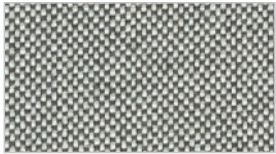
T9404



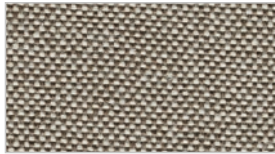
T9616



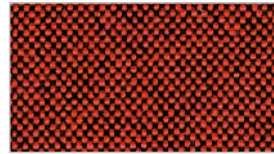
T9707



T9801



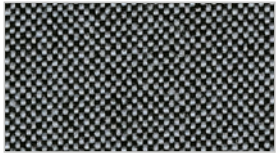
T9201



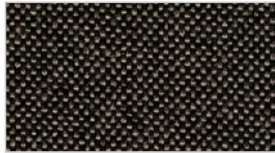
T9408



T9618



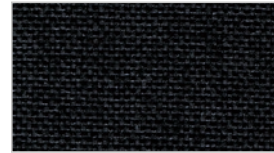
T9808



T9212



T9416

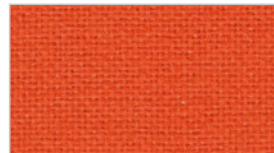


T9838

**JET BIO ACTIVE**  
CAT. C



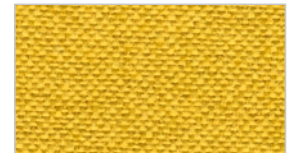
J1006



J4051



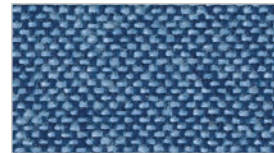
J6007



J9304



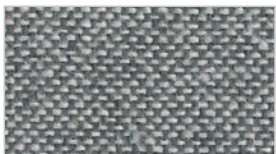
J9401



J9601



J7041



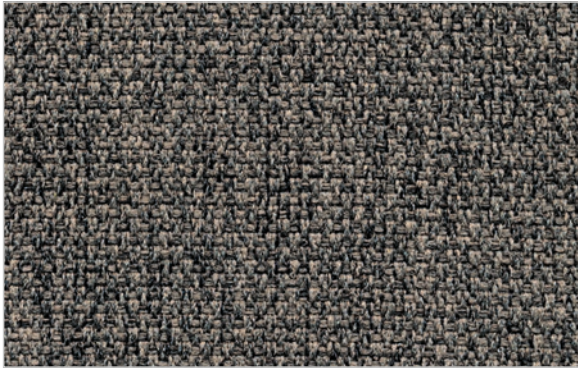
J9804



J9806



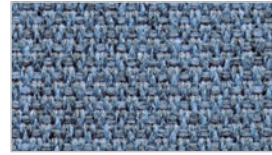
**MINI**  
CAT. D



M1514



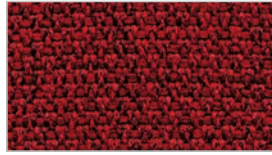
M4530



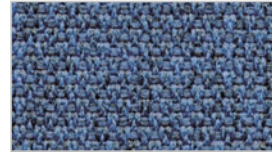
M6524



M3508



M4528



M6512



M3581



M8504



M8511



M4506



M6504



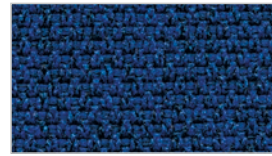
M7522



M8513



M4503



M6515

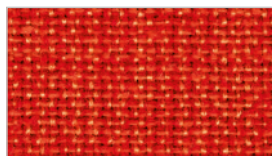


M7509

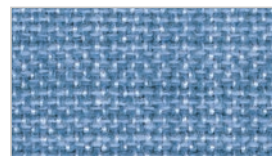
**RUSTICO**  
CAT. D+



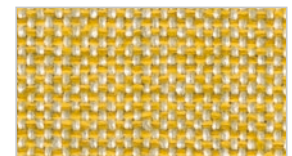
RU9106



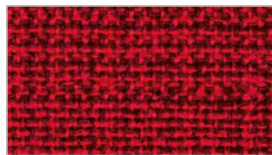
RU9401



RU9603



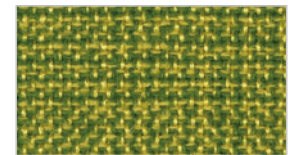
RU9304



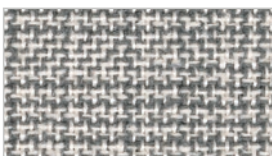
RU9405



RU9615



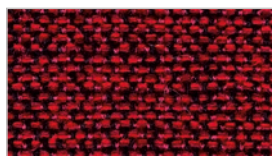
RU9713



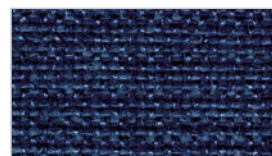
RU9801



RU9216



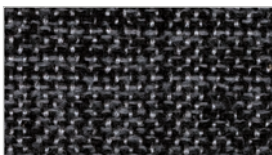
RU9407



RU9613



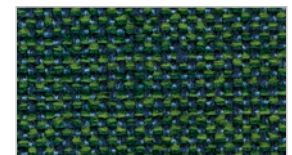
RU9715



RU9808



RU9810



RU9721



# VERA PELLE

CAT. E



VP01



VP04



VP06



VP14



VP10



VP07



VP17



VP03



VP08



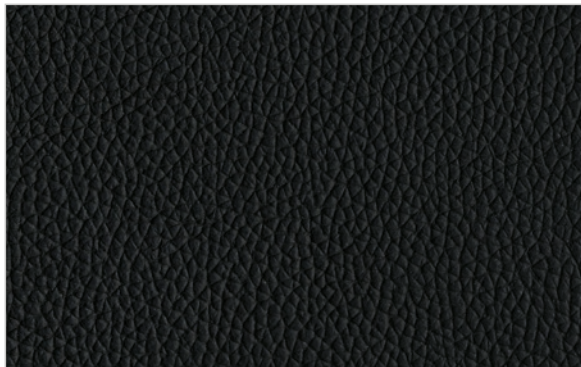
VP16



VP11

# VERA PELLE LUX

CAT. G



PL860



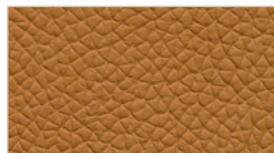
PL826



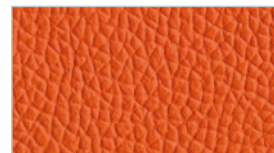
PL837



PL835



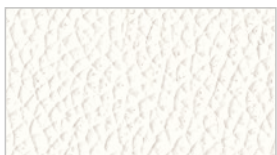
PL818



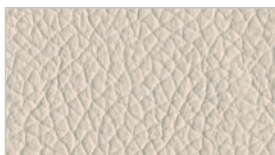
PL839



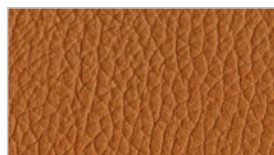
PL881



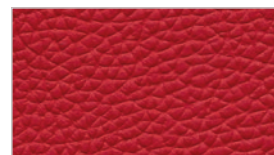
PL810



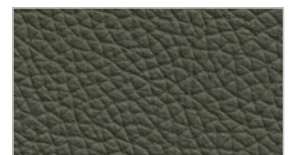
PL930



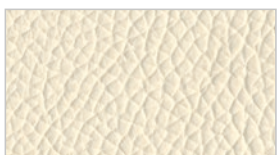
PL819



PL843



PL833



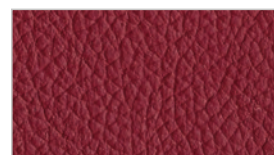
PL872



PL931



PL823



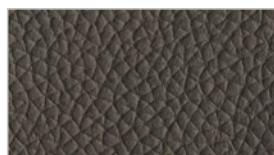
PL844



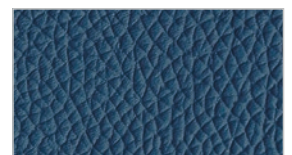
PL878



PL858



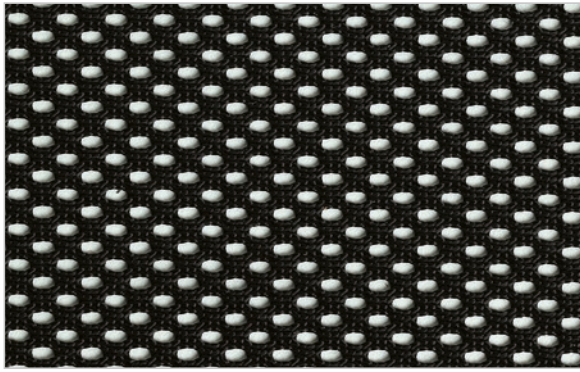
PL859



PL874



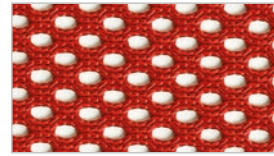
# MUST



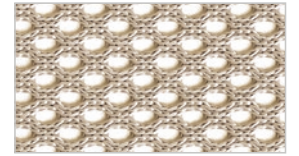
P1



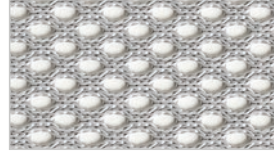
P5



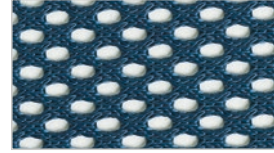
P10



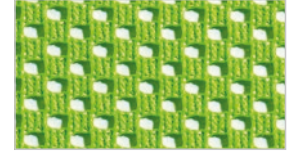
P6



P2



P8

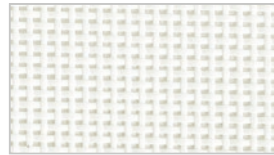


P3

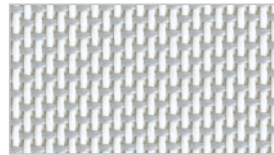
# NET



N22



N20



N21



N24

# MAX CAT. D+



MX1069



MX8007



MX8033



## BONDAI CAT. A

**Composizione:** 100% Poliestere

**Peso:** 350 g/ml

**Resistenza abrasione (Martindale) UNI EN ISO 12947-2:** 150.000 cicli

**Pilling UNI EN ISO 12945-2:** 5 (5.000 cicli)

**Solidità alla luce artificiale UNI EN ISO 105-B02:** 7 (scala dei blu)

**Solidità allo sfregamento UNI EN ISO 105-X12:** 5 (scala dei grigi)

**Procedimenti di lavaggio e asciugatura domestici per prove**

**tessili UNI EN ISO 6330:** Ordito: - 0% - Trama: - 0,5%

**Solidità del colore al lavaggio domestico e commerciale UNI EN**

**ISO 105-C06:** Scarico: 5 - Degradazione: 5

**Composition:** 100% Polyester

**Weight:** 350 g/lm

**Abrasion resistance (Martindale method) ISO 12947-2:** 150.000 rubs

**Pilling ISO 12945-2:** 5 (5.000 rubs)

**Colour fastness to artificial light ISO 105-B02:** 7 (blue scale)

**Colour fastness to rubbing ISO 105-X12:** 5 (grey scale)

**Domestic washing/drying procedures for textile testing ISO 6330:**

**Warp:** - 0% - Weft: - 0,5%

**Colour fastness to domestic/commercial laundering ISO 105-C06:**

**Staining:** 5 - Colour change: 5

**Manutenzione e lavaggio - Cleaning and washing**



**Reazioni al fuoco - Flammability**

Con gomma adeguata - with proper foam

UNI 9175 classe 1IM - EN 1021/1-2 - BS 5852-2 (Crib 5)

## RADIO CAT. B

**Composizione:** 100% Poliestere FR

**Peso:** 560 g/ml

**Resistenza abrasione (Martindale) UNI EN ISO 12947-2:** 80.000 cicli

**Pilling UNI EN ISO 12945-2:** 5 (5.000 cicli)

**Solidità alla luce artificiale UNI EN ISO 105-B02:** 6 (scala dei blu)

**Solidità allo sfregamento UNI EN ISO 105-X12:** 5 (scala dei grigi)

**Procedimenti di lavaggio e asciugatura domestici per prove**

**tessili UNI EN ISO 6330:** Ordito: - 0,5% - Trama: - 0,5%

**Solidità del colore al lavaggio domestico e commerciale UNI EN**

**ISO 105-C06:** Scarico: 5 - Degradazione: 5

**Composition:** 100% Polyester FR

**Weight:** 560 g/lm

**Abrasion resistance (Martindale method) ISO 12947-2:** 80.000 rubs

**Pilling ISO 12945-2:** 5 (5.000 rubs)

**Colour fastness to artificial light ISO 105-B02:** 6 (blue scale)

**Colour fastness to rubbing ISO 105-X12:** 5 (grey scale)

**Domestic washing/drying procedures for textile testing ISO 6330:**

**Warp:** - 0,5% - Weft: - 0,5%

**Colour fastness to domestic/commercial laundering ISO 105-C06:**

**Staining:** 5 - Colour change: 5

**Manutenzione e lavaggio - Cleaning and washing**



**Reazioni al fuoco - Flammability**

C1 - B1 - M1 - BS 5852-2 (Crib 5) - BS 7176 Medium Hazard

## KING L CAT. C

**Composizione:** 100% Poliestere Trevira CS

**Peso:** 365 g/ml

**Resistenza abrasione (Martindale) UNI EN ISO 12947-2:** 70.000 cicli

**Pilling UNI EN ISO 12945-2:** 4/5 (5.000 cicli)

**Solidità alla luce artificiale UNI EN ISO 105-B02:** 6/7 (scala dei blu)

**Solidità allo sfregamento UNI EN ISO 105-X12:** 5 (scala dei grigi)

**Procedimenti di lavaggio e asciugatura domestici per prove**

**tessili UNI EN ISO 6330:** Ordito: - 2,5% - Trama: - 2,5%

**Solidità del colore al lavaggio domestico e commerciale UNI EN**

**ISO 105-C06:** Scarico: 5 - Degradazione: 5

**Composition:** 100% Polyester Trevira CS

**Weight:** 365 g/lm

**Abrasion resistance (Martindale method) ISO 12947-2:** 70.000 rubs

**Pilling ISO 12945-2:** 4/5 (5.000 rubs)

**Colour fastness to artificial light ISO 105-B02:** 6/7 (blue scale)

**Colour fastness to rubbing ISO 105-X12:** 5 (grey scale)

**Domestic washing/drying procedures for textile testing ISO 6330:**

**Warp:** - 2,5% - Weft: - 2,5%

**Colour fastness to domestic/commercial laundering ISO 105-C06:**

**Staining:** 5 - Colour change: 5

**Manutenzione e lavaggio - Cleaning and washing**



**Reazioni al fuoco - Flammability**

C1 - B1 - M1 - IMO Res. A 652 (16) Part 8 Upholstery

BS 5852-2 (Crib 5) - BS 7176 Medium Hazard

## TORINO CAT. C

**Composizione:** 100% Poliestere Trevira CS

**Peso:** 365 g/ml

**Resistenza abrasione (Martindale) UNI EN ISO 12947-2:** 70.000 cicli

**Pilling UNI EN ISO 12945-2:** 5 (5.000 cicli)

**Solidità alla luce artificiale UNI EN ISO 105-B02:** 7 (scala dei blu)

**Solidità allo sfregamento UNI EN ISO 105-X12:** 5 (scala dei grigi)

**Procedimenti di lavaggio e asciugatura domestici per prove**

**tessili UNI EN ISO 6330:** Ordito: - 1,5% - Trama: - 2%

**Solidità del colore al lavaggio domestico e commerciale UNI EN**

**ISO 105-C06:** Scarico: 5 - Degradazione: 5

**Composition:** 100% Polyester Trevira CS

**Weight:** 365 g/lm

**Abrasion resistance (Martindale method) ISO 12947-2:** 70.000 rubs

**Pilling ISO 12945-2:** 5 (5.000 rubs)

**Colour fastness to artificial light ISO 105-B02:** 7 (blue scale)

**Colour fastness to rubbing ISO 105-X12:** 5 (grey scale)

**Domestic washing/drying procedures for textile testing ISO 6330:**

**Warp:** - 1,5% - Weft: - 2%

**Colour fastness to domestic/commercial laundering ISO 105-C06:**

**Staining:** 5 - Colour change: 5

**Manutenzione e lavaggio - Cleaning and washing**



**Reazioni al fuoco - Flammability**

C1 - B1 - M1 - IMO Res. A 652 (16) Part 8 Upholstery

BS 5852-2 (Crib 5) - BS 7176 Medium Hazard

## JET BIOACTIVE CAT. C

**Composizione:** 100% Poliestere Trevira CS

**Peso:** 365 g/ml

**Resistenza abrasione (Martindale) UNI EN ISO 12947-2:** 65.000 cicli

**Pilling UNI EN ISO 12945-2:** 4 (5.000 cicli)

**Solidità alla luce artificiale UNI EN ISO 105-B02:** 6 (scala dei blu)

**Solidità allo sfregamento UNI EN ISO 105-X12:** 5 (scala dei grigi)

**Procedimenti di lavaggio e asciugatura domestici per prove**

**tessili UNI EN ISO 6330:** Ordito: - 3% - Trama: - 3%

**Solidità del colore al lavaggio domestico e commerciale UNI EN**

**ISO 105-C06:** Scarico: 5 - Degradazione: 5

**Composition:** 100% Polyester Trevira CS

**Weight:** 365 g/lm

**Abrasion resistance (Martindale method) ISO 12947-2:** 65.000 rubs

**Pilling ISO 12945-2:** 4 (5.000 rubs)

**Colour fastness to artificial light ISO 105-B02:** 6 (blue scale)

**Colour fastness to rubbing ISO 105-X12:** 5 (grey scale)

**Domestic washing/drying procedures for textile testing ISO 6330:**

**Warp:** - 3% - Weft: - 3%

**Colour fastness to domestic/commercial laundering ISO 105-C06:**

**Staining:** 5 - Colour change: 5

**Manutenzione e lavaggio - Cleaning and washing**



**Reazioni al fuoco - Flammability**

C1 - B1 - M1 - IMO Res. A 652 (16) Part 8 Upholstery

BS 5852-2 (Crib 5) - BS 7176 Medium Hazard

## MINI CAT. D

**Composizione:** 100% Poliestere Trevira CS

**Peso:** 480 g/ml

**Resistenza abrasione (Martindale) UNI EN ISO 12947-2:** 100.000 cicli

**Pilling UNI EN ISO 12945-2:** 5 (5.000 cicli)

**Solidità alla luce artificiale UNI EN ISO 105-B02:** 6 (scala dei blu)

**Solidità allo sfregamento UNI EN ISO 105-X12:** 5 (scala dei grigi)

**Procedimenti di lavaggio e asciugatura domestici per prove**

**tessili UNI EN ISO 6330:** Ordito: - 3% - Trama: - 0,5%

**Solidità del colore al lavaggio domestico e commerciale UNI EN**

**ISO 105-C06:** Scarico: 5 - Degradazione: 5

**Composition:** 100% Polyester Trevira CS

**Weight:** 480 g/lm

**Abrasion resistance (Martindale method) ISO 12947-2:** 100.000 rubs

**Pilling ISO 12945-2:** 5 (5.000 rubs)

**Colour fastness to artificial light ISO 105-B02:** 6 (blue scale)

**Colour fastness to rubbing ISO 105-X12:** 5 (grey scale)

**Domestic washing/drying procedures for textile testing ISO 6330:**

**Warp:** - 3% - Weft: - 0,5%

**Colour fastness to domestic/commercial laundering ISO 105-C06:**

**Staining:** 5 - Colour change: 5

**Manutenzione e lavaggio - Cleaning and washing**



**Reazioni al fuoco - Flammability**

C1 - B1 - M1 - IMO Res. A 652 (16) Part 8 Upholstery

BS 5852-2 (Crib 5) - BS 7176 Medium Hazard

## RUSTICO CAT. D+

**Composizione:** 100% Poliestere Trevira CS

**Peso:** 560 g/ml

**Resistenza abrasione (Martindale) UNI EN ISO 12947-2:** 70.000 cicli

**Pilling UNI EN ISO 12945-2:** 4/5 (5.000 cicli)

**Solidità alla luce artificiale UNI EN ISO 105-B02:** 7 (scala dei blu)

**Solidità allo sfregamento UNI EN ISO 105-X12:** 4/5 (scala dei grigi)

**Procedimenti di lavaggio e asciugatura domestici per prove**

**tessili UNI EN ISO 6330:** Ordito: - 1% - Trama: - 2,5%

**Solidità del colore al lavaggio domestico e commerciale UNI EN**

**ISO 105-C06:** Scarico: 5 - Degradazione: 5

**Composition:** 100% Polyester Trevira CS

**Weight:** 560 g/lm

**Abrasion resistance (Martindale method) ISO 12947-2:** 70.000 rubs

**Pilling ISO 12945-2:** 4/5 (5.000 rubs)

**Colour fastness to artificial light ISO 105-B02:** 7 (blue scale)

**Colour fastness to rubbing ISO 105-X12:** 4/5 (grey scale)

**Domestic washing/drying procedures for textile testing ISO 6330:**

**Warp:** - 1% - Weft: - 2,5%

**Colour fastness to domestic/commercial laundering ISO 105-C06:**

**Staining:** 5 - Colour change: 5

**Manutenzione e lavaggio - Cleaning and washing**



**Reazioni al fuoco - Flammability**

C1 - B1 - M1 - IMO Res. A 652 (16) Part 8 Upholstery

BS 5852-2 (Crib 5) - BS 7176 Medium Hazard

## MAX CAT. D+

**Composizione:** 60% Poliammide - 40% Poliestere

**Peso:** 365 g/ml

**Resistenza abrasione (Martindale) UNI EN ISO 12947-2:** 150.000 cicli

**Pilling UNI EN ISO 12945-2:** 5 (5.000 cicli)

**Solidità alla luce artificiale UNI EN ISO 105-B02:** 6 (scala dei blu)

**Solidità allo sfregamento UNI EN ISO 105-X12:** 4/5 (scala dei grigi)

**Procedimenti di lavaggio e asciugatura domestici per prove**

**tessili UNI EN ISO 6330:** Ordito: - 3% - Trama: - 3%

**Solidità del colore al lavaggio domestico e commerciale UNI EN**

**ISO 105-C06:** Scarico: 4/5 - Degradazione: 4/5

**Composition:** 60% Polyamide - 40% Polyester

**Weight:** 365 g/lm

**Abrasion resistance (Martindale method) ISO 12947-2:** 150.000 rubs

**Pilling ISO 12945-2:** 5 (5.000 rubs)

**Colour fastness to artificial light ISO 105-B02:** 6 (blue scale)

**Colour fastness to rubbing ISO 105-X12:** 4/5 (grey scale)

**Domestic washing/drying procedures for textile testing ISO 6330:**

**Warp:** - 3% - Weft: - 3%

**Colour fastness to domestic/commercial laundering ISO 105-C06:**

**Staining:** 4/5 - Colour change: 4/5

**Manutenzione e lavaggio - Cleaning and washing**





## NET

**Composizione:** 70% PVC - 30% Poliestere

**Peso:** 560 g/ml

**Resistenza abrasione (Martindale) UNI EN ISO 12947-2:** 100.000 cicli

**Pilling UNI EN ISO 12945-2:** 5 (5.000 cicli)

**Solidità allo sfregamento UNI EN ISO 105-X12:** 4/5 (scala dei grigi)

**Resistenza e allungamento a rottura UNI EN ISO 1421:**

Longitudinale 310 N - Trasversale 270 N

**Composition:** 70% PVC - 30% Polyester

**Weight:** 560 g/lm

**Abrasion resistance (Martindale method) ISO 12947-2:** 100.000 rubs

**Pilling ISO 12945-2:** 5 (5.000 rubs)

**Colour fastness to rubbing ISO 105-X12:** 4/5 (grey scale)

**Tensile strength and elongation at break ISO 1421:**

Longitudinal 310 N - Transverse 270 N

**Manutenzione e lavaggio - Cleaning and washing**



## MUST

**Composizione:** 100% Poliestere FR

**Peso:** 540 g/ml

**Resistenza abrasione (Martindale) UNI EN ISO 12947-2:** 100.000 cicli

**Pilling UNI EN ISO 12945-2:** 5 (5.000 cicli)

**Solidità alla luce artificiale UNI EN ISO 105-B02:** 5 (scala dei blu)

**Solidità allo sfregamento UNI EN ISO 105-X12:** 5 (scala dei grigi)

**Composition:** 100% Polyester FR

**Weight:** 540 g/lm

**Abrasion resistance (Martindale method) ISO 12947-2:** 100.000 rubs

**Pilling ISO 12945-2:** 5 (5.000 rubs)

**Colour fastness to artificial light ISO 105-B02:** 5 (blue scale)

**Colour fastness to rubbing ISO 105-X12:** 5 (grey scale)

**Manutenzione e lavaggio - Cleaning and washing**



**Reazioni al fuoco - Flammability**

C1

## LEGENDA LEGEND



Il tessuto è completamente riciclabile in quanto composto da fibra vergine 100% poliestere.

*The fabric is completely recyclable as it is composed of 100% polyester virgin fiber.*



OEKO-TEX® Standard 100 è una certificazione tessile indipendente, nata come etichetta di garanzia per la salute dei consumatori e garantisce l'assenza di sostanze nocive sia nelle materie prime che nei processi di lavorazione. I tessuti rispondenti a questo standard inoltre sono conformi alla classe 2°, cioè idoneo al contatto diretto con la pelle.

*OEKO-TEX® Standard 100 is an independent textile certification, born as a guarantee label for the health of consumers and guarantees the absence of harmful substances both in raw materials and in manufacturing processes.*



Ecolabel UE è il marchio di qualità ecologica dell'Unione Europea che contraddistingue prodotti e servizi che, oltre a garantire elevati standard prestazionali, sono caratterizzati da un ridotto impatto ambientale durante l'intero ciclo di vita.

*EU Ecolabel is the European Union's ecological quality mark that distinguishes products and services which, in addition to ensuring high performance standards, are characterized by a reduced environmental impact during their entire life cycle.*



Trevira CS è un particolare tipo di poliestere la cui composizione chimica lo rende permanentemente ignifugo:

questa proprietà si mantiene intatta anche dopo l'uso continuato nel tempo e le frequenti pulizie. La fibra è di facile manutenzione e grazie alla sua composizione chimica (fibra sintetica, non organica) crea naturalmente un disagevole terreno di coltura per muffe e batteri, difficilmente attaccabile.

*Trevira CS is a particular type of polyester whose chemical composition makes it permanently fireproof: this property remains intact even after continued use over time and frequent cleaning. The fiber is easy to maintain and thanks to its chemical composition (synthetic fiber, not organic) it naturally creates an awkward breeding ground for molds and bacteria, which is difficult to attack.*



Bioactive è un marchio di TREVIRA CS, leader mondiale nel settore, per identificare un prodotto con spiccate caratteristiche antibatteriche oltre che ignifughe. Il filato in poliestere contiene intrinsecamente nella fibra un agente antibatterico a base di ioni d'argento che garantisce al tessuto una proprietà permanente nel tempo. L'utilizzo ed il lavaggio non causano degradamento delle sue qualità. Questa caratteristica inibisce la crescita batterica all'interno e sulla superficie del tessuto e l'utilizzo ed il lavaggio non causano il degradamento delle sue qualità.

*Bioactive is a trademark of TREVIRA CS, a world leader in the sector, to identify a product with strong antibacterial as well as fireproof characteristics. The polyester yarn intrinsically contains in the fiber an antibacterial agent based on silver ions which guarantees the fabric a permanent property over time. Use and washing do not cause degradation of its qualities. This feature inhibits bacterial growth inside and on the surface of the fabric and use and washing do not cause degradation of its qualities.*



Tessuto rispondente alla norma IMO FTPC Parte 8 Risoluzione A.652 (16).

*Fabric complying with IMO FTPC Part 8 Resolution A.652 (16).*



Rivestimento trattato o addizionato con agenti antibatterici.

*Coating treated or added with antibacterial agents.*



## SKILL CAT. B

**Composizione:** 69% PVC - 20% PL - 10% COT - 1% PU

**Peso:** 728 g/ml

**Resistenza all'abrasione UNI EN ISO 5470-2:** 50.000 cicli

**Solidità del colore alla luce artificiale UNI EN ISO 105-B02:** 6 (scala dei blu)

**Solidità allo sfregamento UNI EN ISO 105-X12:** 4/5 (scala dei grigi)

**Resistenza e allungamento a rottura UNI EN ISO 1421:** Longitudinale 500 N - Trasversale 290 N

**Composition:** 69% PVC - 20% PL - 10% COT - 1% PU

**Weight:** 728 g/lm

**Abrasion resistance ISO 5470:** 50.000 rubs

**Colour fastness to artificial light ISO 105-B02:** 6 (blue scale)

**Colour fastness to rubbing ISO 105-X12:** 4/5 (grey scale)

**Tensile strength and elongation at break ISO 1421:** Longitudinal 500 N - Transverse 290 N

**Manutenzione e lavaggio - Cleaning and washing**



**Reazioni al fuoco - Flammability**

Con gomma adeguata - with proper foam

UNI 9175 classe 1IM - EN 1021/1-2 - BS 5852 PART II CRIB 5

## SECRET CAT. C

**Composizione:** 76% PVC - 22% PL - 2% PU

**Peso:** 756 g/ml

**Resistenza all'abrasione UNI EN ISO 5470-2:** Metodo 1: 76.000 cicli - Metodo 2: 200.000 cicli

**Solidità del colore alla luce artificiale UNI EN ISO 105-B02:** 6/7 (scala dei blu)

**Solidità allo sfregamento UNI EN ISO 105-X12:** 4/5 (scala dei grigi)

**Resistenza e allungamento a rottura UNI EN ISO 1421:** Longitudinale 578N/144 mm - Trasversale 261N/221 mm

**Resistenza all'adesione del rivestimento UNI EN ISO 2411:** Indelaminabile

**Forza di lacerazione di provette a pantalone (Metodo a lacerazione semplice) UNI EN ISO 13937-2:**

Ordito 31,3 - Trama 21,6 N

**Composition:** 76% PVC - 22% PL - 2% PU

**Weight:** 756 g/lm

**Abrasion resistance ISO 5470:** Part 1: 76.000 rubs - Part 2: 200.000 rubs

**Colour fastness to artificial light ISO 105-B02:** 6/7 (blue scale)

**Colour fastness to rubbing ISO 105-X12:** 4/5 (grey scale)

**Tensile strength and elongation at break ISO 1421:** Longitudinal 578 N / 144 mm - Transverse 261 N / 221 mm

**Coating adhesion ISO 2411:** Inseparable

**Tear force of trouser-shaped test specimens (Single tear method) ISO 13937-3:** Warp 31,3 N - Weft 21,6 N

**Manutenzione e lavaggio - Cleaning and washing**



**Reazioni al fuoco - Flammability**

Con gomma adeguata - with proper foam

UNI 9175 classe 1IM - EN 1021/1-2 - BS 5852 PART II CRIB 5

## VERA PELLE CAT. E

**Composizione:** Vera Pelle tipo fiore smerigliato di provenienza extra europea, tinta all'anilina, rifinitura pigmentata all'acqua

**Spessore:** 0,9 / 1 mm

**Determinazione del carico di strappo-Parte 1: Strappo singolo UNI EN ISO 3377-1:** 75 N

**Solidità del colore a cicli di strofinio UNI EN ISO 11640:** 500 cicli: 5 - 250 cicli: 4/5 (scala dei grigi)

**Solidità del colore alla luce artificiale UNI EN ISO 105-B02:** 8 (scala dei blu)

**Prova per l'adesione delle rifiniture UNI EN ISO 11644:** 6,2 N

**Determinazione della resistenza a flessione - Parte 1: Metodo con flessometro UNI EN ISO 5402-1:**

> 20.000 cicli: nessuna rottura

**Composition:** Extra-European cattle hides, corrected grain and printed, dyeing aniline, water-based pigments

**Thickness:** 0,9 / 1 mm

**Determination of tear load-Part 1: Single edge tear:** 75 N

**Colour fastness to cycles of to-and-fro rubbing ISO 11640:** 500 rules: 5 - 250 rules: 4/5 (grey scale)

**Colour fastness to artificial light ISO 105-B02:** 8 (blue scale)

**Test for adhesion of finish ISO 11644:** 6,2 N

**Determination of flex resistance-Part 1: Flexometer method ISO 5402-1:** > 20.000 rules: no breakage

## AVVERTENZE

I colori chiari non devono essere messi a contatto con tessuti e capi d'abbigliamento trattati con coloranti non fissati o con scarse solidità di tintura, onde evitare macchie ed aloni di cui non possiamo garantire la pulitura.

I colori e le finiture visualizzate in questo campionario sono puramente indicativi e possono differire dagli originali.

## WARNINGS

To avoid permanent stains, the lighter colours of the article should not be brought into contact with textiles and clothing coloured with unfixed dyes. We cannot guarantee the ability to remove unknown dyes from light coloured product.

The colors and finishes shown in this sample are indicative only and may differ from the original.

## PELLE LUX CAT. G

**Composizione:** Vera Pelle Bovina tipo fiore corretto di provenienza europea, tinta all'anilina passante in botte, rifinitura pigmentata all'acqua

**Spessore:** 1 / 1,2 mm

**Determinazione del Ph UNI EN ISO 4045:** 4,7

**Determinazione del carico di strappo-Parte 1: Strappo singolo UNI EN ISO 3377-1:** 42 N

**Solidità del colore a cicli di strofinio UNI EN ISO 11640:** 500 cicli: 4/5 - 250 cicli: 4/5 - 80 cicli: 4/5 (scala dei grigi)

**Solidità del colore alla luce artificiale UNI EN ISO 105-B02:** 8 (scala dei blu)

**Prova per l'adesione delle rifiniture UNI EN ISO 11644:** 9 N

**Determinazione della resistenza a flessione - Parte 1: Metodo con flessometro UNI EN ISO 5402-1:**

> 50.000 cicli: nessuna rottura

**Solidità del colore alla goccia d'acqua UNI EN ISO 15700:** 4/5 (scala dei grigi)

**Determinazione della temperatura di rottura a freddo dei rivestimenti superficiali UNI EN ISO 17233:** - 25°C

**Verifica dell'accendibilità dei mobili imbottiti Parte 1: sigaretta-Parte 2: fiammifero UNI EN 1021-1/2:**

N/1 (Non Ignizione)

**Composition:** European cattle hides, corrected grain, through-dyeing aniline, water-based pigments

**Thickness:** 1 / 1,2 mm

**Ph value ISO 4045:** 4,7

**Determination of tear load-Part 1: Single edge tear ISO 3377-1:** 42 N

**Colour fastness to cycles of to-and-fro rubbing ISO 11640:** 500 rules: 4/5 - 250 rules: 4/5 - 80 rules

4/5 (grey scale)

**Colour fastness to artificial light ISO105-B02:** 8 (blue scale)

**Test for adhesion of finish ISO 11644:** 9 N

**Determination of flex resistance-Part 1: Flexometer method ISO 5402-1:** > 50.000 rules: no breakage

**Colour fastness to water spotting ISO 15700:** 4/5 (scala dei grigi)

**Physical and mechanical tests - Determination of cold crack temperature of surface coatings ISO 17233:**

- 25°C

**Assessment of the ignitability of upholstered furniture: Cigarette test - Macht test EN 1021-1/2:**

N/1 (Non Ignition)

## LEGENDA LEGEND



Tessuto rispondente alla norma IMO FTPC Parte 8 Risoluzione A.652 (16).

Fabric complying with IMO FTPC Part 8 Resolution A.652 (16).



Rivestimento trattato o addizionato con agenti antibatterici.

Coating treated or added with antibacterial agents.



Antimicrobico addizionato durante le fasi di lavorazione, privo completamente di ftalati, inodore e incolore, che blocca la proliferazione di organismi microbici quali acari, batteri e funghi, mantenendo inalterate nel tempo le caratteristiche del rivestimento. Il principio attivo utilizzato (2-n-Octyl-4-isothiazolin-3-one) impedisce la formazione di muffe ed elimina anche i batteri che causano cattivi odori.

Antimicrobial added during the processing phases, completely free of phthalates, odorless and colorless, which blocks the proliferation of microbial organisms such as mites, bacteria and fungi, while maintaining the characteristics of the coating over time. The active ingredient used (2-n-Octyl-4-isothiazolin-3-one) prevents the formation of mold and also eliminates the bacteria that cause bad odors.

## CURA E MANUTENZIONE

Per informazioni sulla pulizia, cura e manutenzione dei rivestimenti visita il nostro sito:

[www.olivogroppo.it](http://www.olivogroppo.it)

## CARE INSTRUCTIONS

For information on cleaning, care and maintenance of the coverings, visit our website:

[www.olivogroppo.it](http://www.olivogroppo.it)





[www.olivoegrosso.it](http://www.olivoegrosso.it)

Via Cortolet, 1 - 33048 San Giovanni al Natisone (Udine) Italia - Tel. +39 0432 758001 / +39 0432 758375